

# BNC SERIES 10

## CABLE JACKS

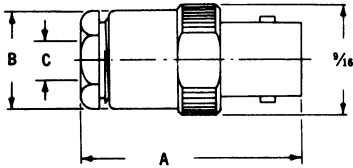


Fig. 1

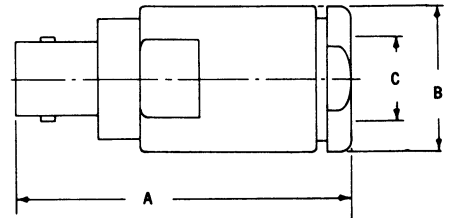


Fig. 2

DELTA PART NO.	FIG.	DIELECTRIC	USED WITH CABLE RG-/U	DIMENSIONS			REMARKS
				A	B	C	
UG-89C/U	1	Teflon	55B, 58C, 141A, 142B, 223	1-5/32	1/2	.224	
UG-261/U	1	Rexolite	59B, 62A, 71B, 140, 210	1-1/8	7/16	.258	
UG-261C/U	1	Teflon	59B, 62A, 71B, 140, 210	1-5/32	1/2	.258	
UG-1056/U	1	Teflon	122	1-5/32	1/2	.177	
1008-015-A001	1	Teflon	55B, 58C, 141A, 142B, 223	1-5/32	1/2	.224	Captive Contact
1008-021-A000	1	Teflon	59B, 62A, 71B, 140, 210	1-5/32	1/2	.258	
1008-021-A001	1	Teflon	59B, 62A, 71B, 140, 210	1-5/32	1/2	.258	Captive Contact
1008-004-A000	2	Teflon	8A, 9B, 87A, 213, 214, 225	1-3/4	3/4	.442	
1008-001-A000	2	Teflon	5B, 21A, 143A, 212, 222	1-3/4	3/4	.345	
1008-043-A000	1	Teflon	180B, 195A	1-5/32	1/2	.160	
1008-031-A003	1	Teflon	.141 DIA., Semi-Rigid	1-5/32	1/2	.144	Solder Assembly
1008-036-A000	1	Teflon	174, 188A	1-5/32	1/2	.120	
1008-038-A000	1	Teflon	178B, 196A	1-5/32	1/2	.084	
1008-029-A001	1	Teflon	122	1-5/32	1/2	.177	Captive Contact
1008-036-A001	1	Teflon	174, 188A	1-5/32	1/2	.120	Captive Contact

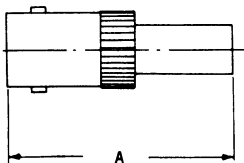


Fig. 3

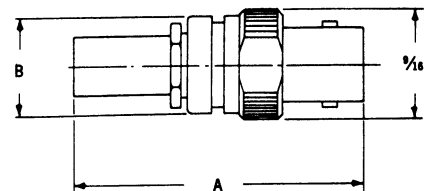
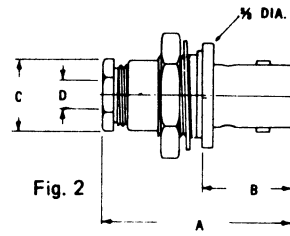
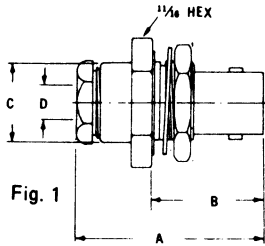


Fig. 4

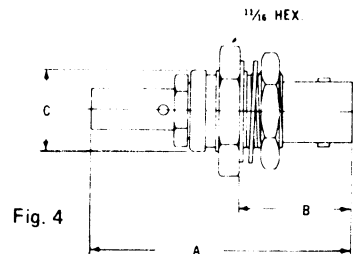
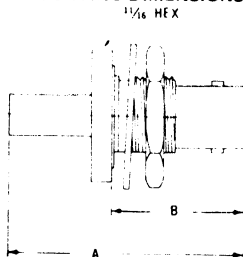
DELTA PART NO.	FIG.	DIELECTRIC	USED WITH CABLE RG-/U	DIMENSIONS		REMARKS
				A	B	
1009-013-A000	4	Teflon	55B, 142B, 223	1-1/2	1/2	Long Crimp
1009-017-A000	4	Teflon	58C, 141A	1-1/2	1/2	Long Crimp
1009-020-A000	4	Teflon	59B,	1-1/2	1/2	Long Crimp
1010-013-A000	3	Teflon	55B, 142B, 223	1-5/32	-	Short Crimp
1010-017-A000	3	Teflon	58C, 141A	1-5/32	-	Short Crimp
1010-020-A000	3	Teflon	59B,	1-5/32	-	Short Crimp

## BNC SERIES 10 BULKHEAD JACKS



DELTA PART NO.	FIG.	DIELECTRIC	MAX. PANEL	USED WITH CABLE RG-/U	DIMENSIONS				MTG. FIG.	REMARKS
					A	B	C	D		
UG-624/U	2	Rexolite	3/32	59B, 62A, 71B, 140, 210	1-1/8	37/64	27/64	.258	57	
UG-909/U	1	Teflon	1/16	55B, 58C, 141A, 142B, 223	1-5/32	11/16	1/2	.224	59	
UG-910B/U	1	Teflon	3/16	59B, 62A, 71B, 140, 210	1-5/32	13/16	1/2	.258	59	
1017-014-A570	2	Teflon	3/32	55B, 58C, 141A, 142B	1-1/8	37/64	27/64	.212	57	
1016-029-A570	1	Teflon	3/32	122	1-1/8	3/4	27/64	.177	57	
1016-014-A570	1	Teflon	3/32	55B, 58C, 141A, 142B	1-1/8	3/4	27/64	.212	57	
1016-021-A591	1	Teflon	1/16	59B, 62A, 71B, 140, 210	1-5/32	11/16	1/2	.258	59	Captive Contact
1016-029-A590	1	Teflon	1/16	122	1-5/32	11/16	1/2	.177	59	
1016-015-A591	1	Teflon	1/16	55B, 58C, 141A, 142B, 223	1-5/32	11/16	1/2	.224	59	Captive Contact
1016-035-A590	1	Teflon	1/16	161	1-5/32	11/16	1/2	.094	59	
1016-043-A591	1	Teflon	1/16	180B, 195A	1-5/32	11/16	1/2	.160	59	Captive Contact
1016-001-A590	1	Teflon	1/16	5B, 21A, 143A, 212, 222	1-1/4	11/16	9/16	.345	59	
1016-029-A591	1	Teflon	1/16	122	1-5/32	11/16	1/2	.177	59	Captive Contact
1017-015-A541	2	Teflon	1/16	55B, 58C, 141A, 142B, 223	1-3/16	5/8	1/2	.224	54	Captive Contact
1016-038-A590	1	Teflon	1/16	178B, 196A	1-5/32	11/16	1/2	.084	59	
1016-036-A590	1	Teflon	1/16	174, 188A	1-5/32	11/16	1/2	.120	59	
1016-036-A591	1	Teflon	1/16	174, 188A	1-5/32	11/16	1/2	.120	59	Captive Contact
1016-040-A591	1	Teflon	1/16	179B, 187A	1-5/32	11/16	1/2	.120	59	Captive Contact
1016-038-A591	1	Teflon	1/16	178B, 196A	1-5/32	11/16	1/2	.084	59	Captive Contact
1016-036-A598	1	Teflon	1/16	174, 188A	1-5/32	11/16	1/2	.120	59	Hermetically Sealed
1016-038-A598	1	Teflon	1/16	178B, 196A	1-5/32	11/16	1/2	.084	59	Hermetically Sealed
1016-043-A590	1	Teflon	3/16	180B, 195A	1-5/32	13/16	1/2	.160	59	
1016-040-A590	1	Teflon	1/16	179B, 187A	1-5/32	13/16	1/2	.120	59	
1016-018-A591	1	Teflon	3/16	58C, 142B	1-5/32	13/16	1/2	.209	59	Captive Contact
1016-038-A590-1	1	Teflon	3/16	178B, 196A	1-5/32	13/16	1/2	.084	59	
1016-015-A591-2	1	Teflon	3/16	55B, 58C, 141A, 142B, 223	1-5/32	13/16	1/2	.224	59	Captive Contact
1016-031-A593	1	Teflon	3/16	.141 DIA., Semi-Rigid	1-5/32	13/16	1/2	.144	59	Solder Assembly
1016-022-A597	1	Teflon	1/16	.070 DIA., Semi-Rigid	1-5/32	11/16	1/2	.073	59	Captive Contact

SEE LAST PAGE FOR MOUNTING DIMENSIONS.



DELTA PART NO.	FIG.	DIELECTRIC	USED WITH CABLE RG-/U	DIMENSIONS			MTG. FIG.
				A	B	C	
1018-017-A590	4	Teflon	58C, 141A	1-19/32	11/16	1/2	59
1018-023-A590	4	Teflon	71B	1-19/32	11/16	1/2	59
1018-020-A590	4	Teflon	59B, 62A, 140	1-19/32	11/16	1/2	59
1018-013-A590	4	Teflon	55B, 142B, 223	1-19/32	11/16	1/2	59
1019-013-A590	3	Teflon	55B, 142B, 223	1-5/16	11/16	-	59
1019-016-A590	3	Teflon	58C, 141A	1-5/16	11/16	-	59
1019-020-A590	3	Teflon	59B, 62A, 140	1-5/16	11/16	-	59
1019-023-A590	3	Teflon	71B	1-5/16	11/16	-	59

SEE LAST PAGE FOR MOUNTING DIMENSIONS.

# BNC SERIES 10

## PANEL JACKS

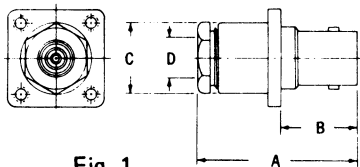


Fig. 1

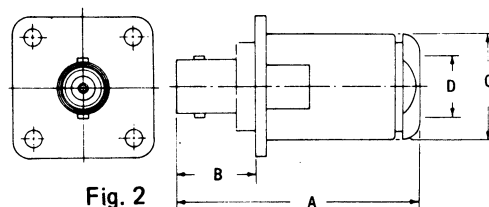
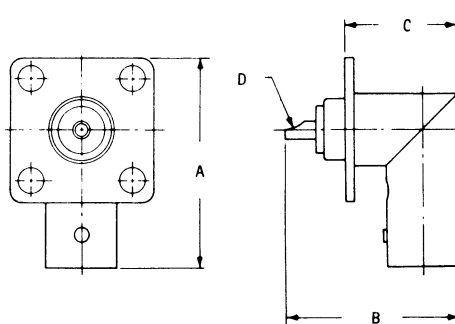


Fig. 2

DELTA PART NO.	FIG.	DIELECTRIC	USED WITH CABLE RG-/U	DIMENSIONS				MTG. FIG.	REMARKS
				A	B	C	D		
UG-262/U	1	Rexolite	59B, 62A, 71B, 140, 210	1-1/8	5/8	7/16	.258	07	
UG-262C/U	1	Teflon	59B, 62A, 71B, 140, 210	1-5/32	9/16	1/2	.258	07	
UG-291C/U	1	Teflon	55B, 58C, 141A, 142B, 223	1-5/32	9/16	1/2	.224	07	
UG-1055/U	1	Teflon	122	1-5/32	9/16	1/2	.177	07	
1011-015-A071	1	Teflon	55B, 58C, 141A, 142B, 223	1-5/32	9/16	1/2	.224	07	Captive Contact
1011-021-A071	1	Teflon	59B, 62A, 71B, 140, 210	1-5/32	9/16	1/2	.258	07	Captive Contact
1011-004-A330	2	Teflon	8A, 9B, 87A, 213, 214, 225	1-3/4	9/16	3/4	.442	33	
1011-015-A081	1	Teflon	55B, 58C, 141A, 142B, 223	1-5/32	9/16	1/2	.224	08	Captive Contact
1011-001-A330	2	Teflon	5B, 21A, 143A, 212, 222	1-3/4	9/16	3/4	.345	33	
1011-021-A091	1	Teflon	59B, 62A, 71B, 140, 210	1-5/32	9/16	1/2	.258	09	Captive Contact
1011-Q15-A091	1	Teflon	55B, 58C, 141A, 142B, 223	1-5/32	9/16	1/2	.224	09	Captive Contact
1011-038-A120	1	Teflon	178B, 196A	1-5/32	9/16	1/2	.084	12	
1011-038-A070	1	Teflon	178B, 196A	1-5/32	9/16	1/2	.084	07	
1011-038-A080	1	Teflon	178B, 196A	1-5/32	9/16	1/2	.084	08	
1011-015-A120	1	Teflon	55B, 58C, 141A, 142B, 223	1-5/32	9/16	1/2	.224	12	
1011-029-A071	1	Teflon	122	1-5/32	9/16	1/2	.177	07	Captive Contact
1011-021-A060	1	Teflon	59B, 62A, 71B, 140, 210	1-5/32	9/16	1/2	.258	06	
1011-036-A070	1	Teflon	174, 188A	1-5/32	9/16	1/2	.120	07	
1011-021-A100	1	Teflon	59B, 62A, 71B, 140, 210	1-1/8	5/8	7/16	.258	10	
1011-043-A071	1	Teflon	180B, 195A	1-5/32	9/16	1/2	.160	07	Captive Contact
1011-036-A071	1	Teflon	174, 188A	1-5/32	9/16	1/2	.120	07	Captive Contact
1011-035-A071	1	Teflon	161	1-5/32	9/16	1/2	.094	07	Captive Contact
1011-025-A073	1	Teflon	.087 DIA., Semi-Rigid	1-5/32	9/16	1/2	.090	07	Solder Assembly

SEE LAST PAGE FOR MOUNTING DIMENSIONS.

## RIGHT ANGLE PANEL RECEPTACLES



DELTA PART NO.	DIELECTRIC	DIMENSIONS				MTG. FIG.
		A	B	C	D	
UG-535/U	Teflon	1-3/32	29/32	19/32	.062	18
1015-000-A070	Teflon	1-1/16	29/32	21/32	.062	07

SEE LAST PAGE FOR MOUNTING DIMENSIONS.