

BNC SERIES 10 PANEL RECEPTACLES

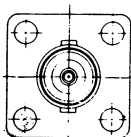
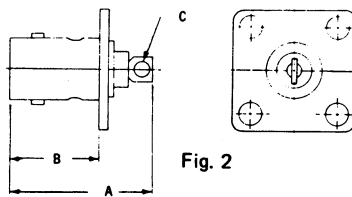
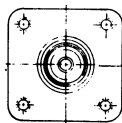
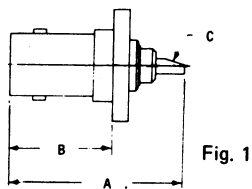
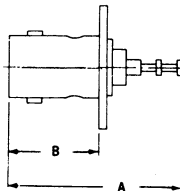


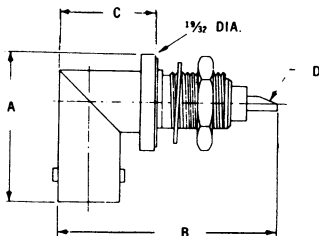
Fig. 3



DELTA PART NO.	FIG.	DIELECTRIC	DIMENSIONS			MTG. FIG.
			A	B	C	
UG-185/U	3	Rexolite	1-1/16	9/16	—	18
UG-290/U	1	Rexolite	1-1/32	5/8	.043	07
UG-290A/U	1	Teflon	1-1/16	5/8	.062	07
UG-447/U	1	Rexolite	1-1/32	5/8	.043	12
UG-928/U	2	Rexolite	27/32	9/16	.094	18
1012-000-A070	3	Teflon	1-1/16	5/8	—	07
1013-000-A120	1	Teflon	1-1/32	5/8	.059	12
1013-000-A064	1	Rexolite	1-1/32	5/8	.059	06
1012-000-A180	3	Teflon	1-1/16	9/16	—	18
1014-000-A180	2	Teflon	27/32	9/16	.094	18
1013-000-A094	1	Rexolite	1-1/32	5/8	.043	09
1013-000-A334	1	Rexolite	1-1/32	5/8	.043	33
1013-000-A084	1	Rexolite	1-1/32	5/8	.043	08
1013-000-A134	1	Rexolite	1-1/32	5/8	.043	13
1013-000-A090	1	Teflon	1-1/16	5/8	.062	09
1013-000-A180	1	Teflon	1-1/16	5/8	.062	18
1013-000-A330	1	Teflon	1-1/16	5/8	.062	33

SEE LAST PAGE FOR MOUNTING DIMENSIONS.

RIGHT ANGLE BULKHEAD RECEPTACLES



DELTA PART NO.	DIELECTRIC	DIMENSIONS				MTG. FIG.
		A	B	C	D	
UG-1098/U	Teflon	59/64	1-1/4	19/32	.062	63
UG-1098A/U	Teflon	59/64	1-11/32	19/32	.062	63
UG-1174/U	Teflon	59/64	1-1/4	19/32	.062	62

SEE LAST PAGE FOR MOUNTING DIMENSIONS.

BNC SERIES 10

BULKHEAD RECEPTACLES

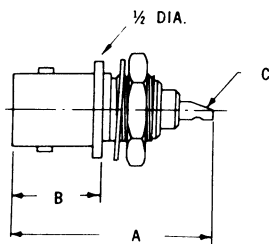


Fig. 1

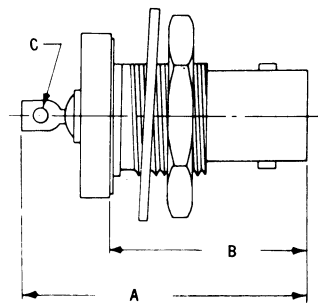


Fig. 2

DELTA PART NO.	FIG.	DIELECTRIC	DIMENSIONS			MAX. PANEL	MTG. FIG.	REMARKS
			A	B	C			
UG-604/U	1	Rexolite	1-1/32	17/32	.043	1/16	76	
UG-625/U	1	Rexolite	1-1/32	1/2	.043	3/32	62	
UG-625B/U	1	Teflon	1-1/16	15/32	.062	3/32	62	
UG-657/U	1	Rexolite	1-9/32	19/32	.052	3/16	75	Pressurized
UG-657A/U	1	Teflon	1-9/32	19/32	.052	3/16	75	Pressurized
UG-911A/U	2	Teflon	1-7/32	53/64	.060	7/32	65	Hermetically Sealed
UG-912/U	1	Teflon	1-7/32	33/64	.060	7/32	63	Hermetically Sealed
UG-912A/U	1	Teflon	1-11/32	33/64	.060	11/32	63	Hermetically Sealed
UG-1094/U	1	Teflon	1-1/16	15/32	.062	3/32	65	
UG-1094A/U	1	Teflon	1-3/16	15/32	.062	7/32	65	
UG-1873/U	1	Teflon	1-13/64	33/64	.060	11/32	63	Hermetically Sealed
1020-000-A620	1	Teflon	1-1/32	1/2	.043	3/32	62	
1020-000-A652	1	Teflon	1-1/16	15/32	.052	3/32	65	Polarized
1020-000-A590	1	Teflon	1-1/16	15/32	.062	1/8	59	

SEE LAST PAGE FOR MOUNTING DIMENSIONS.

PLUG TYPE RECEPTACLES

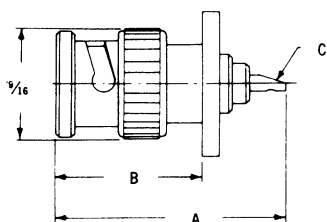


Fig. 1

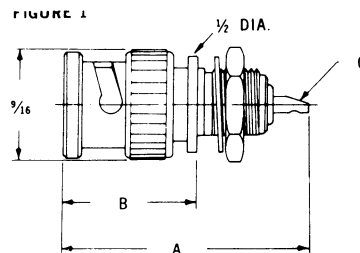
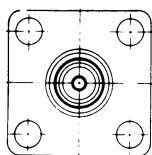


Fig. 2

DELTA PART NO.	FIG.	DIELECTRIC	DIMENSIONS			MAX. PANEL	MTG. FIG.
			A	B	C		
UG-1104/U	1	Teflon	1-3/16	51/64	.059	-	18
UG-1104A/U	1	Teflon	1-3/16	51/64	.059	-	18
1024-000-A651	2	Teflon	1-1/4	11/16	.059	5/32	65
1023-000-A330	1	Teflon	1-3/16	51/64	.059	-	33

SEE LAST PAGE FOR MOUNTING DIMENSIONS.