

## C SERIES 14 STRAIGHT ADAPTERS

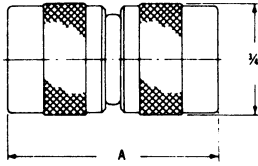


Fig. 1

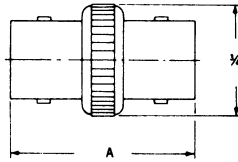


Fig. 2

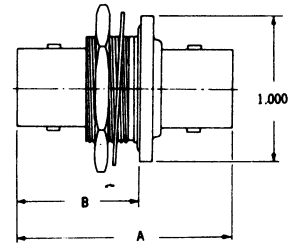
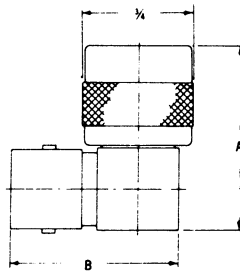


Fig. 3

DELTA PART NO.	FIG.	DIELECTRIC	DIMENSIONS		MAX. PANEL	MTG. FIG.	REMARKS
			A	B			
UG642A/U	1	Teflon	1-29/64	—	—	—	Hermetically Sealed
UG643/U	2	Teflon	1-9/32	—	—	—	
UG1138A/U	3	Teflon	1-31/64	55/64	1/8	51	

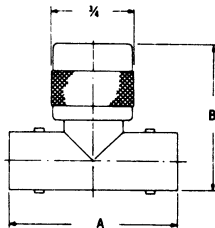
SEE LAST PAGE FOR MOUNTING DIMENSIONS.

## RIGHT ANGLE ADAPTERS



DELTA PART NO.	DIELECTRIC	DIMENSIONS	
		A	B
UG567A/U	Teflon	1-1/4	1-5/32

## TEE ADAPTERS



DELTA PART NO.	DIELECTRIC	DIMENSIONS	
		A	B
UG566A/U	Teflon	1-17/32	1-9/32

# C SERIES 14

## DUST CAPS

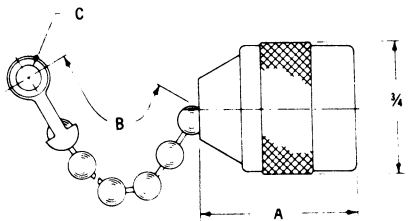


Fig. 1

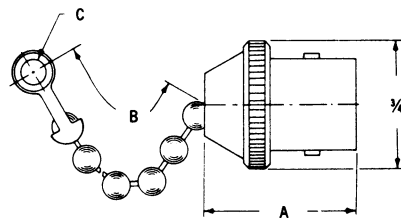
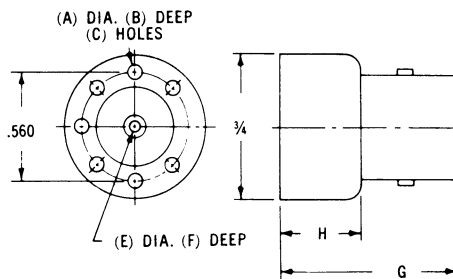


Fig. 2

DELTA PART NO.	FIG.	DIMENSIONS		
		A	B	C
MX1142A/U	1	29/32	2-1/2	.144
MX1143A/U	2	57/64	3-1/2	.144

## STRIP TRANSMISSION LINE ADAPTERS



DELTA PART NO.	DIELECTRIC	DIMENSIONS						
		A	B	C	E	F	G	H
1456-000-A000	Teflon	.078	1/4	7	.063	5/32	59/64	27/64
1456-000-A000-2	Teflon	#2-56	1/4	8	#1-72	5/32	59/64	27/64

Other Configurations Available Upon Request.