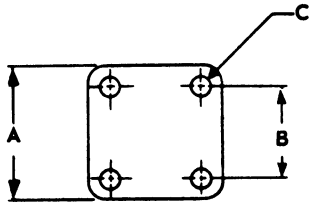
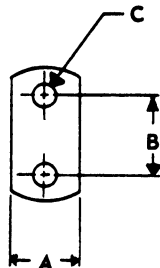


CONNECTOR FLANGES

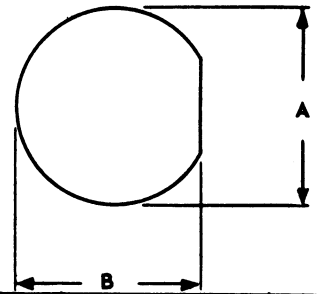


CODE	A	B	C
01	7/16	.312	.067
02	7/16	.300	.062
03	1/2	.375	#2-56 TAP
04	1/2	.360	.089
05	1/2	.343	.102
06	11/16	.500	#4-40 TAP
07	11/16	.500	#3-56 TAP
08	11/16	.500	.136
09	11/16	.500	.125
10	11/16	.500	.120
11	11/16	.500	.116
12	11/16	.500	.109
13	11/16	.500	.096
14	3/4	.562	C'SINK # 2
15	3/4	.562	.099
16	3/4	.531	#4-40 TAP
17	3/4	.531	#3-56 TAP
18	3/4	.531	.136
19	3/4	.531	.113
20	3/4	.500	.113
21	3/4	.500	.093
22	15/16	.718	#2-56 TAP
23	15/16	.718	.125
24	1	.772	.156
25	1	.718	#8-32 TAP
26	1	.718	#6-32 TAP
27	1	.718	#4-40 TAP
28	1	.718	#3-56 TAP
29	1	.718	C'SINK # 4
30	1	.718	.166
31	1	.718	.156
32	1	.718	.136
33	1	.718	.125
34	1 3/32	.812	.150
35	1 1/8	.718	#4-40 TAP
36	1 3/16	.906	#6-32 TAP
37	1 3/16	.906	#4-40 TAP
38	1 3/16	.906	.169
39	1 3/16	.906	.152
40	1 3/16	.906	.125
41	1 1/4	.937	.152
42	1 11/32	.969	#6-32 TAP
43	1 11/32	.969	.169
44	1 15/32	1.062	.147
45	2	1.437	.257
46	2	1.437	.201
47	2 1/2	2.000	.250
48	2 1/2	1.875	.257

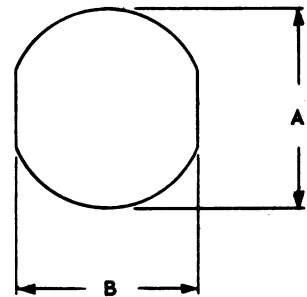


CODE	A	B	C
49	.333	.484	.102

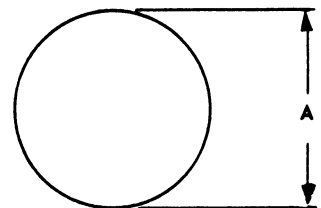
RECOMMENDED PANEL CUTOUTS



CODE	A	B
50	.890	.850
51	.755	.723
52	.755	.700
53	.692	.670
54	.630	.598
55	.630	.583
56	.567	.547
57	.557	.531
58	.505	.480
59	.505	.473
60	.505	.450
61	.442	.419
62	.442	.410
63	.407	.362
64	.380	.360
65	.380	.348
66	.319	.292
67	.255	.236
68	.195	.176



CODE	A	B
69	.755	.692
70	.755	.661
71	.630	.567
72	.630	.536
73	.505	.442
74	.505	.475
75	.380	.341
76	.380	.317
77	.283	.272
78	.195	.161
79	.255	.238



CODE	A
80	.505
81	1.255
82	.255
83	.630