

# TNC SERIES 12

## CABLE JACKS

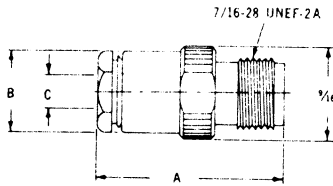


Fig. 1

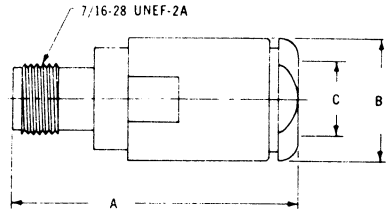


Fig. 2

DELTA PART NO.	FIG.	DIELECTRIC	USED WITH CABLE RG-/U	DIMENSIONS			REMARKS
				A	B	C	
1208-015-A000	1	Teflon	55B, 58C, 141A, 142B, 223	1-5/32	1/2	.224	
1208-015-A001	1	Teflon	55B, 58C, 141A, 142B, 223	1-5/32	1/2	.224	Captive Contact
1208-021-A000	1	Teflon	59B, 62A, 71B, 140, 210	1-5/32	1/2	.258	
1208-021-A001	1	Teflon	59B, 62A, 71B, 140, 210	1-5/32	1/2	.258	Captive Contact
1208-029-A000	1	Teflon	122	1-5/32	1/2	.177	
1208-031-A003	1	Teflon	.141 DIA., Semi-Rigid	1-5/32	1/2	.144	Solder Assembly
1208-038-A000	1	Teflon	178B, 196A	1-5/32	1/2	.084	
1208-004-A000	2	Teflon	8A, 9B, 87A, 213, 214, 225	1-3/4	3/4	.442	
1208-018-A000	1	Teflon	58C, 142B	1-5/32	1/2	.209	
1208-018-A001	1	Teflon	58C, 142B	1-5/32	1/2	.209	Captive Contact
1208-031-A007	1	Teflon	.141 DIA., Semi-Rigid	1-5/32	1/2	.144	Solder Assembly
1208-025-A003	1	Teflon	.087 DIA., Semi-Rigid	1-5/32	1/2	.090	Captive Contact
1208-036-A000	1	Teflon	174, 188A	1-5/32	1/2	.120	Solder Assembly
1208-032-A001	1	Teflon	141A	1-5/32	1/2	.198	Captive Contact
1208-038-A001	1	Teflon	178B, 196A	1-5/32	1/2	.084	Captive Contact
1208-043-A001	1	Teflon	180B, 195A	1-5/32	1/2	.160	Captive Contact

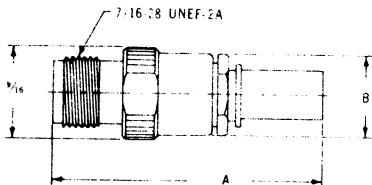


Fig. 3

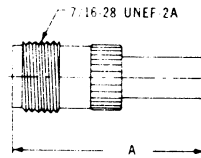


Fig. 4

DELTA PART NO.	FIG.	DIELECTRIC	USED WITH CABLE RG-/U	DIMENSIONS		REMARKS
				A	B	
1209-023-A000	3	Teflon	71B	1-1/2	1/2	Long Crimp
1210-013-A000	4	Teflon	55B, 142B, 223	1-5/32	-	Short Crimp
1210-017-A000	4	Teflon	58C, 141A	1-5/32	-	Short Crimp
1209-020-A000	3	Teflon	59B,	1-1/2	1/2	Long Crimp
1209-013-A000	3	Teflon	55B, 142B, 223	1-1/2	1/2	Long Crimp
1209-017-A000	3	Teflon	58C, 141A	1-1/2	1/2	Long Crimp
1210-020-A000	4	Teflon	59B,	1-5/32	-	Short Crimp

# TNC SERIES 12

## BULKHEAD JACKS

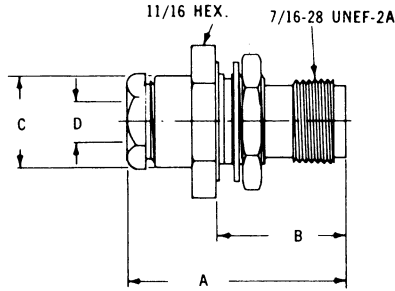


Fig. 1

DELTA PART NO.	FIG.	DIELECTRIC	MAX. PANEL	USED WITH CABLE RG-/U	DIMENSIONS				MTG. FIG.	REMARKS
					A	B	C	D		
1216-015-A590	1	Teflon	1/16	55B, 58C, 141A, 142B, 223	1-5/32	11/16	1/2	.224	59	
1216-015-A591	1	Teflon	1/16	55B, 58C, 141A, 142B, 223	1-5/32	11/16	1/2	.224	59	Captive Contact
1216-029-A590	1	Teflon	1/16	122	1-5/32	11/16	1/2	.177	59	
1216-021-A591	1	Teflon	1/16	59B, 62A, 71B, 140, 210	1-5/32	11/16	1/2	.258	59	Captive Contact
1216-038-A590	1	Teflon	1/16	178B, 196A	1-5/32	11/16	1/2	.084	59	
1216-038-A591	1	Teflon	1/16	178B, 196A	1-5/32	11/16	1/2	.084	59	Captive Contact
1216-031-A593	1	Teflon	1/16	.141 DIA., Semi-Rigid	1-5/32	11/16	1/2	.144	59	Solder Assembly
1216-029-A591	1	Teflon	1/16	122	1-5/32	11/16	1/2	.177	59	Captive Contact
1216-043-A591	1	Teflon	1/16	180B, 195A	1-5/32	11/16	1/2	.160	59	Captive Contact
1216-031-A598	1	Teflon	1/16	.141 DIA., Semi-Rigid	1-51/64	11/16	1/2	.144	59	Solder Assembly Hermet. Sealed
1216-032-A598	1	Teflon	1/16	141A	1-51/64	11/16	1/2	.198	59	Hermetically Sealed
1216-035-A590	1	Teflon	1/16	161	1-5/32	11/16	1/2	.094	59	
1216-025-A593	1	Teflon	1/16	.087 DIA., Semi-Rigid	1-5/32	11/16	1/2	.090	59	Solder Assembly
1216-032-A591	1	Teflon	1/16	141A	1-5/32	11/16	1/2	.198	59	Captive Contact
1216-018-A591	1	Teflon	1/16	58C, 142B	1-5/32	11/16	1/2	.209	59	Captive Contact
1216-049-A591	1	Teflon	1/16	225	1-3/4	11/16	3/4	.453	59	Captive Contact
1216-036-A591	1	Teflon	3/16	174, 188A	1-5/32	11/16	1/2	.120	59	Captive Contact
1216-015-A591	1	Teflon	3/16	55B, 58C, 141A, 142B, 223	1-5/32	11/16	1/2	.224	59	Captive Contact
1216-022-A597	1	Teflon	1/16	.070 DIA., Semi-Rigid	1-5/32	11/16	1/2	.073	59	Solder Assembly Captive Contact

SEE LAST PAGE FOR MOUNTING DIMENSIONS.

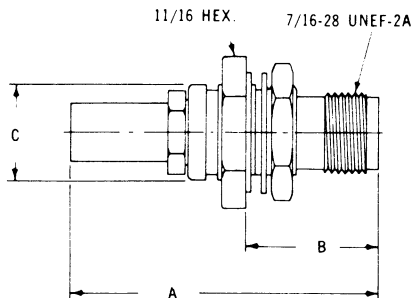


Fig. 2

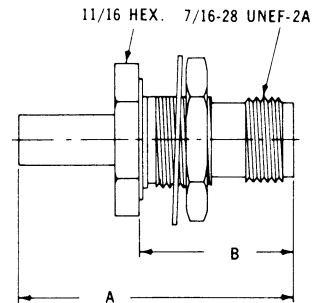


Fig. 3

DELTA PART NO.	FIG.	DIELECTRIC	MAX. PANEL	USED WITH CABLE RG-/U	DIMENSIONS			MTG. FIG.	REMARKS
					A	B	C		
1218-013-A590	2	Teflon	1/16	55B, 142B, 223	1-19/32	11/16	1/2	59	Long Crimp
1219-013-A590	3	Teflon	1/16	55B, 142B, 223	1-5/16	11/16	-	59	Short Crimp
1218-052-A590	2	Teflon	1/16	304	1-19/32	11/16	1/2	59	Long Crimp
1218-017-A590	2	Teflon	1/16	58C, 141A	1-19/32	11/16	1/2	59	Long Crimp
1219-017-A590	3	Teflon	1/16	58C, 141A	1-5/16	11/16	-	59	Short Crimp
1219-020-A590	3	Teflon	1/16	59B,	1-5/16	11/16	-	59	Short Crimp

# TNC SERIES 12

## PANEL JACKS

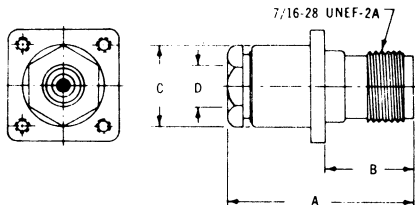


Fig. 1

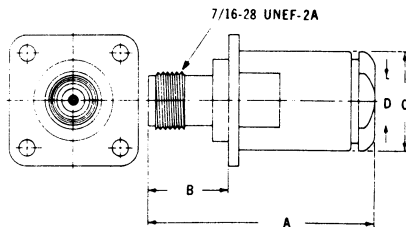
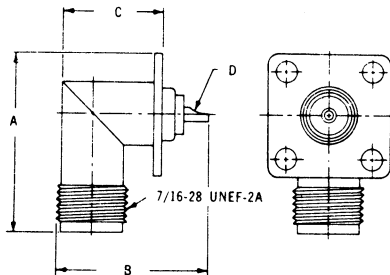


Fig. 2

DELTA PART NO.	FIG.	DIELECTRIC	USED WITH CABLE RG-/U	DIMENSIONS				MTG. FIG.	REMARKS
				A	B	C	D		
1211-021-A070	1	Teflon	59B, 62A, 71B, 140, 210	1-5/32	9/16	1/2	.258	07	Captive Contact
1211-021-A071	1	Teflon	59B, 62A, 71B, 140, 210	1-5/32	9/16	1/2	.258	07	
1211-015-A070	1	Teflon	55B, 58C, 141A, 142B, 223	1-5/32	9/16	1/2	.224	07	Captive Contact
1211-015-A071	1	Teflon	55B, 58C, 141A, 142B, 223	1-5/32	9/16	1/2	.224	07	
1211-029-A070	1	Teflon	122	1-5/32	9/16	1/2	.177	07	Solder Assembly
1211-001-A330	2	Teflon	5B, 21A, 143A, 212, 222	1-3/4	5/8	3/4	.345	33	
1211-038-A070	1	Teflon	178B, 196A	1-5/32	9/16	1/2	.084	07	Solder Assembly
1211-031-A073	1	Teflon	.141 DIA., Semi-Rigid	1-5/32	9/16	1/2	.144	07	
1211-004-A330	2	Teflon	8A, 9B, 87A, 213, 214, 225	1-3/4	5/8	3/4	.442	33	Captive Contact
1211-018-A071	1	Teflon	58C, 142B	1-5/32	9/16	1/2	.209	07	
1211-018-A070	1	Teflon	58C, 142B	1-5/32	9/16	1/2	.209	07	Captive Contact
1211-018-A181	1	Teflon	58C, 142B	1-5/32	9/16	1/2	.209	18	
1211-036-A080	1	Teflon	174, 188A	1-5/32	9/16	1/2	.120	08	Captive Contact
1211-036-A181	1	Teflon	174, 188A	1-5/32	9/16	1/2	.120	18	
1211-043-A181	1	Teflon	180B, 195A	1-5/32	9/16	1/2	.160	18	Captive Contact
1211-032-A181	1	Teflon	141A	1-5/32	9/16	1/2	.198	18	
1211-021-A181	1	Teflon	59B, 62A, 71B, 140, 210	1-5/32	9/16	1/2	.258	18	Captive Contact
1211-036-A071	1	Teflon	174, 188A	1-5/32	9/16	1/2	.120	07	
1211-043-A071	1	Teflon	180B, 195A	1-5/32	9/16	1/2	.160	07	Captive Contact

SEE LAST PAGE FOR MOUNTING DIMENSIONS.

## RIGHT ANGLE PANEL RECEPTACLES



DELTA PART NO.	DIELECTRIC	DIMENSIONS				MTG. FIG.
		A	B	C	D	
1215-000-A180	Teflon	1-3/32	29/32	39/64	.062	18
1215-000-A070	Teflon	1-3/32	29/32	39/64	.062	07
1215-000-A080	Teflon	1-3/32	29/32	39/64	.062	08

SEE LAST PAGE FOR MOUNTING DIMENSIONS.