

TNC SERIES 12

PANEL RECEPTACLES

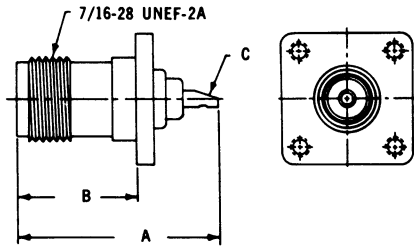


Fig. 1

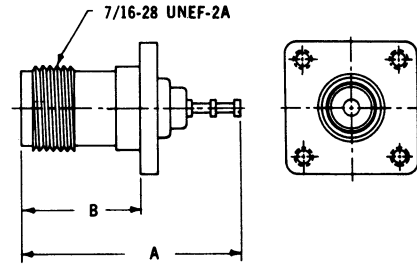
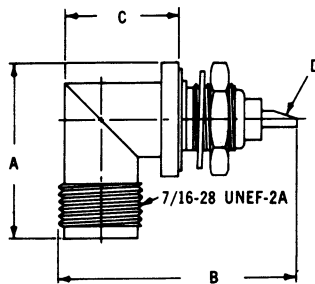


Fig. 2

| DELTA PART NO. | FIG. | DIELECTRIC | DIMENSIONS | | | MTG. FIG. |
|----------------|------|------------|------------|-----|------|-----------|
| | | | A | B | C | |
| 1213-000-A071 | 1 | Teflon | 1-1/16 | 5/8 | .062 | 07 |
| 1213-000-A180 | 1 | Teflon | 1-1/16 | 5/8 | .062 | 18 |
| 1213-000-A080 | 1 | Teflon | 1-1/16 | 5/8 | .062 | 08 |
| 1213-000-A090 | 1 | Teflon | 1-1/16 | 5/8 | .062 | 09 |
| 1213-000-A330 | 1 | Teflon | 1-1/16 | 5/8 | .062 | 33 |
| 1212-000-A070 | 2 | Teflon | 1-1/16 | 5/8 | - | 07 |

SEE LAST PAGE FOR MOUNTING DIMENSIONS.

RIGHT ANGLE BULKHEAD RECEPTACLES



| DELTA PART NO. | DIELECTRIC | DIMENSIONS | | | | MTG. FIG. | REMARKS |
|----------------|------------|------------|-------|-------|------|-----------|---------------------------|
| | | A | B | C | D | | |
| 1222-000-A630 | Teflon | 31/32 | 1-1/4 | 19/32 | .059 | 63 | 5/32 Max. Panel Thickness |
| 1222-000-A620 | Teflon | 31/32 | 1-1/4 | 19/32 | .059 | 62 | 5/32 Max. Panel Thickness |

TNC SERIES 12 BULKHEAD RECEPTACLES

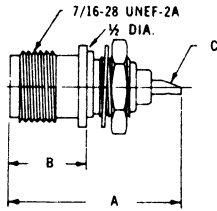


Fig. 1

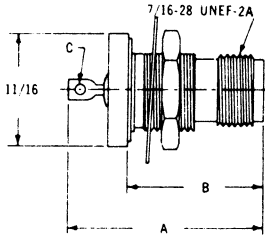


Fig. 2

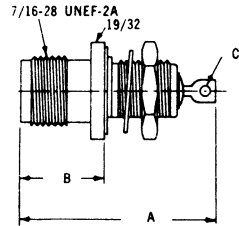
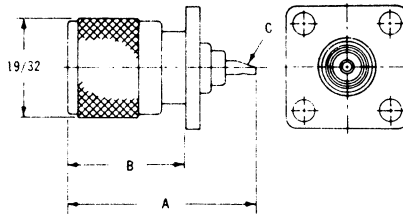


Fig. 3

| DELTA PART NO. | FIG. | DIELECTRIC | MAX. PANEL | DIMENSIONS | | | MTG. FIG. | REMARKS |
|----------------|------|------------|------------|------------|-------|------|-----------|---------------------|
| | | | | A | B | C | | |
| 1220-000-A620 | 1 | Teflon | 1/8 | 1-1/16 | 15/32 | .062 | 62 | |
| 1220-000-A656 | 1 | Teflon | 3/16 | 1-1/16 | 15/32 | .062 | 65 | |
| 1221-000-A598 | 2 | Teflon | 3/16 | 1-13/64 | 53/64 | .060 | 59 | Hermetically Sealed |
| 1220-000-A650 | 1 | Teflon | 1/8 | 1-1/16 | 15/32 | .062 | 65 | |
| 1220-000-A638 | 3 | Teflon | 5/16 | 1-13/64 | 33/64 | .060 | 63 | Hermetically Sealed |

SEE LAST PAGE FOR MOUNTING DIMENSIONS.

PLUG-TYPE RECEPTACLES



| DELTA PART NO. | DIELECTRIC | DIMENSIONS | | | MTG. FIG. |
|----------------|------------|------------|-------|------|-----------|
| | | A | B | C | |
| 1223-000-A180 | Teflon | 1-5/32 | 23/32 | .062 | 18 |
| 1223-000-A330 | Teflon | 1-5/32 | 23/32 | .062 | 33 |

SEE LAST PAGE FOR MOUNTING DIMENSIONS.